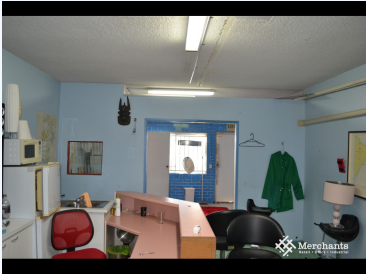


RETAIL SHOP ON BUSY LUTWYCHE ROAD  
(85 M2)

Lease. Call for price



2/566 Lutwyche Road, LUTWYCHE QLD 4030

Retail Shop on Busy Lutwyche Road (85 m2)  
Retail or Office on busy Lutwyche Road that offers fantastic exposure with 23 Million vehicles passing annually. Versatile space that can suit Retail or Office with underground and street parking available. Retail / Office - 85 m2 - 23 Million Vehicle Exposure Annually - Air-conditioning - Reception and Multiple Offices - Underground Parking - Private Amenities and Shower Please call Merchants Commercial for immediate inspection.

LAND INFORMATION:	
Square feet	: 85
BUILDING INFORMATION:	
Built on	: 0
Remodeled on	: 0
Number of Floors	: 1
Floor area (Lower Level)	: 0
Floor area (Main Level)	: 0
Floor area (Upper Level)	: 0
Floor area (Total)	: 0
CONVENIENCE:	